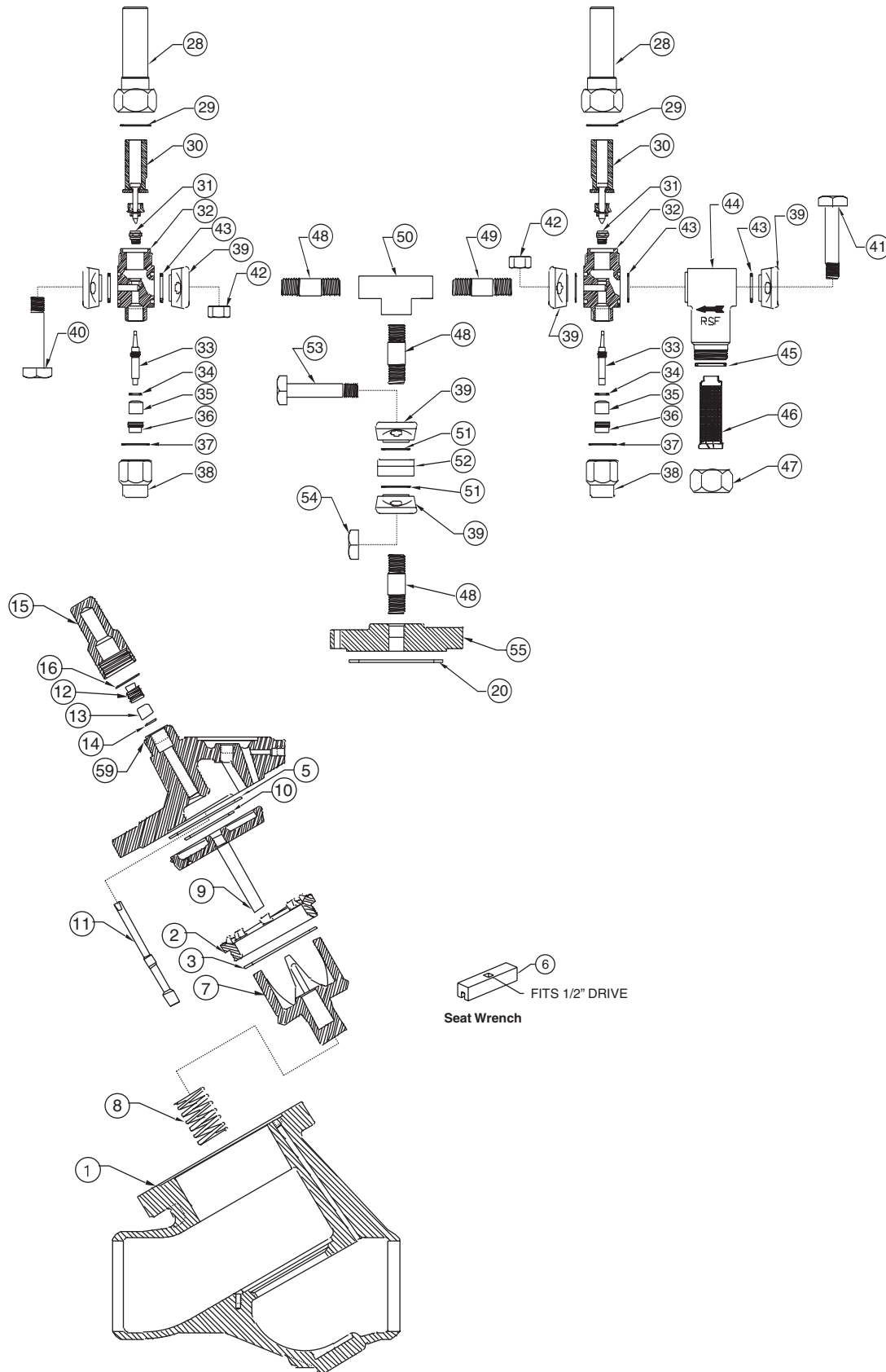


125mm (5") S9W Parts Kits

Item	Description	Qty.	Kit Number
1	Body, Valve		N/A
2	Seat, Valve	1	
3	O-Ring, Seat	1	
4	Screw, Retaining	1	
5	Gasket (Adapter to Body)	1	
6	Wrench, Seat	1	
2-6	Seat Kit		201534
7	Plug, Modulating	1	
8	Spring, Compression	1	
2-8	Plug Kit		201691
9	Piston Stem Assembly	1	
10	Ring, Seal	1	
5, 9a, 10	Piston Kit		201543
11	Stem, Manual Opening	1	
12	Nut, Packing	1	
13	Packing, Stem	1	
14	Washer, Packing	1	
5, 11-14	Stem Kit, Opening		201546
15	Seal Cap	1	
16	Gasket	1	
15-16	Cap Kit, Seal		201549
17	Bolt, Hex Head	6	
18	Nuts	—	
19	Studs	2	
5, 17-19	Bolt Kit		201552
20	Gasket (Bonnet)	1	
3, 5, 10, 16-20	Gasket Kit		201558
22	Knob	2	
23	O-Ring	2	
22-23	Knob Kit		205237
24	Coil Assembly	2	C.F.
28	Tube Assembly	2	
29	Gasket	2	
28-29	Tube Kit		201036
30	Plunger Needle Assembly	2	
31	Seat Assembly	2	
29-31	Plunger Seat Kit		201630

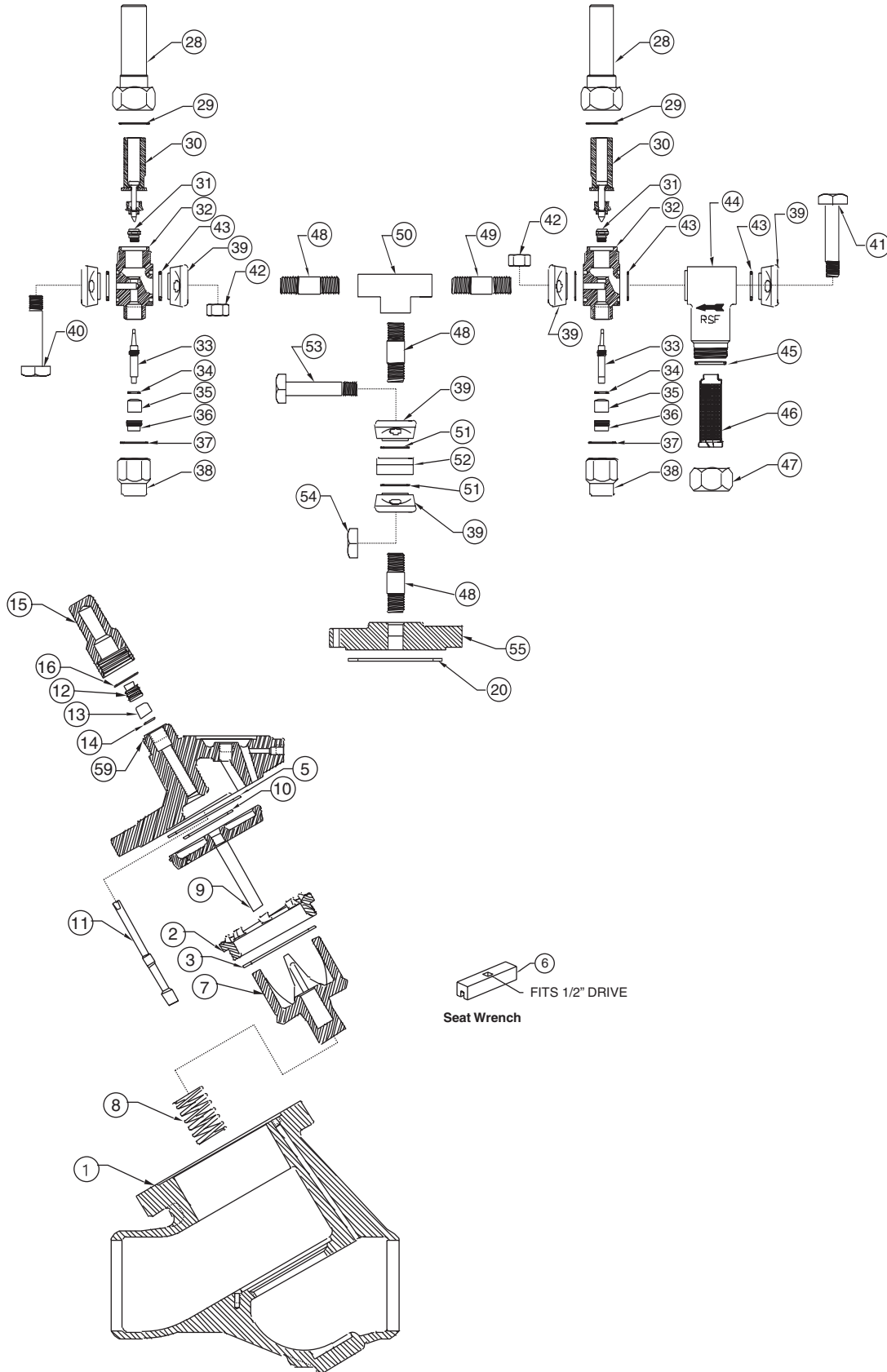
Item	Description	Qty.	Kit Number
32	Body, S6N	2	N/A
33	Stem, Manual Opening	2	
34	Washer	2	
35	Packing, Stem	2	
36	Nut, Packing	2	
33-36	Stem Kit, Opening		201631
37	Gasket	2	
38	Seal Cap	2	
37-38	Cap Kit		201145
39	Flange Kit (2 Flanges only)		200001
40	Bolt	2	
41	Bolt	2	
42	Nut	4	
43	Gasket	5	
40-43	Bolt Kit		
	S6N without Strainer		201290
	S6N with Strainer		201287
29,37,43	Gasket Kit		201632
28-38,43	Pilot Valve Assembly		100990
44	Body, Strainer		N/A
45	Gasket	1	
46	Basket	1	
47	Cap	1	
45-47	Basket, Kit		200136
48	Pipe Nipple	3	302014
49	Pipe Nipple with Orifice	1	200999
50	Tee	1	302083
51	Gasket	2	
52	Screen Assembly	1	
51-52	Screen Assembly Kit		200912
53	Bolt	2	
54	Nut	2	
53-54	Bolt Kit		201672
55	Cover Top		202545
56	O-Ring	1	
57	Insert Seal	1	
20, 56-57	Insert Seal Kit		202333
58	Plug, Pipe	1	302011
5-13-20 58-59	Adapter Cover		202861



150mm (6") S9W Parts Kits

Item	Description	Qty.	Kit Number
1	Body, Valve		N/A
2	Seat, Valve	1	
3	O-Ring, Seat	1	
4	Screw, Retaining	1	
5	Gasket (Adapter to Body)	1	
6	Wrench, Seat	1	
2-6	Seat Kit		201535
7	Plug, Modulating	1	
8	Spring, Compression	1	
2-8	Plug Kit		201692
9	Piston Stem Assembly	1	
10	Ring, Seal	1	
5, 9a, 10	Piston Kit		201544
11	Stem, Manual Opening	1	
12	Nut, Packing	1	
13	Packing, Stem	1	
14	Washer, Packing	1	
5, 11-14	Stem Kit, Opening		201547
15	Seal Cap	1	
16	Gasket	1	
15-16	Cap Kit, Seal		201550
17	Bolt, Hex Head	6	
18	Nuts	—	
19	Studs	2	
5, 17-19	Bolt Kit		201553
20	Gasket (Bonnet)	1	
3, 5, 10, 16-20	Gasket Kit		201559
22	Knob	2	
23	O-Ring	2	
22-23	Knob Kit		205237
24	Coil Assembly	2	C.F.
28	Tube Assembly	2	
29	Gasket	2	
28-29	Tube Kit		201036
30	Plunger Needle Assembly	2	
31	Seat Assembly	2	
29-31	Plunger Seat Kit		201630

Item	Description	Qty.	Kit Number
32	Body, S6N	2	N/A
33	Stem, Manual Opening	2	
34	Washer	2	
35	Packing, Stem	2	
36	Nut, Packing	2	
33-36	Stem Kit, Opening		201631
37	Gasket	2	
38	Seal Cap	2	
37-38	Cap Kit		201145
39	Flange Kit (2 Flanges only)		200001
40	Bolt	2	
41	Bolt	2	
42	Nut	4	
43	Gasket	5	
40-43	Bolt Kit		
	S6N without Strainer		201290
	S6N with Strainer		201287
29, 37, 43	Gasket Kit		201632
28-38, 43	Pilot Valve Assembly		100990
44	Body, Strainer		N/A
45	Gasket	1	
46	Basket	1	
47	Cap	1	
45-47	Basket, Kit		200136
48	Pipe Nipple	3	302014
49	Pipe Nipple with Orifice	1	200999
50	Tee	1	302083
51	Gasket	2	
52	Screen Assembly	1	
51-52	Screen Assembly Kit		200912
53	Bolt	2	
54	Nut	2	
53-54	Bolt Kit		201672
55	Cover Top		202545
56	O-Ring	1	
57	Insert Seal	1	
20, 56-57	Insert Seal Kit		202333
58	Plug, Pipe	1	302011
5-13-20 58-59	Adapter Cover		202484



200mm (8") S9W Parts Kits

Item	Description	Qty.	Kit Number
1	Body, Valve		N/A
2	Seat, Valve	1	
3	O-Ring, Seat	1	
4	Screw, Retaining	1	
5	Gasket (Adapter to Body)	1	
6	Wrench, Seat	1	
2-6	Seat Kit		201536
7	Plug, Modulating	1	
8	Spring, Compression	1	
2-8	Plug Kit		201693
9	Piston Stem Assembly	1	
10	Ring, Seal	1	
5, 9a, 10	Piston Kit		201545
11	Stem, Manual Opening	1	
12	Nut, Packing	1	
13	Packing, Stem	1	
14	Washer, Packing	1	
5, 11-14	Stem Kit, Opening		201548
15	Seal Cap	1	
16	Gasket	1	
15-16	Cap Kit, Seal		201551
17	Bolt, Hex Head	6	
18	Nuts	—	
19	Studs	2	
5, 17-19	Bolt Kit		201554
20	Gasket (Bonnet)	1	
3, 5, 10, 16-20	Gasket Kit		201560
22	Knob	2	
23	O-Ring	2	
22-23	Knob Kit		205237
24	Coil Assembly	2	C.F.
28	Tube Assembly	2	
29	Gasket	2	
28-29	Tube Kit		201036
30	Plunger Needle Assembly	2	
31	Seat Assembly	2	
29-31	Plunger Seat Kit		201630

Item	Description	Qty.	Kit Number
32	Body, S6N	2	N/A
33	Stem, Manual Opening	2	
34	Washer	2	
35	Packing, Stem	2	
36	Nut, Packing	2	
33-36	Stem Kit, Opening		201631
37	Gasket	2	
38	Seal Cap	2	
37-38	Cap Kit		201145
39	Flange Kit (2 Flanges only)		200001
40	Bolt	2	
41	Bolt	2	
42	Nut	4	
43	Gasket	5	
40-43	Bolt Kit		
	S6N without Strainer		201290
	S6N with Strainer		201287
29,37,43	Gasket Kit		201632
28-38,43	Pilot Valve Assembly		100990
44	Body, Strainer		N/A
45	Gasket	1	
46	Basket	1	
47	Cap	1	
45-47	Basket, Kit		200136
48	Pipe Nipple	3	302014
49	Pipe Nipple with Orifice	1	200999
50	Tee	1	302083
51	Gasket	2	
52	Screen Assembly	1	
51-52	Screen Assembly Kit		200912
53	Bolt	2	
54	Nut	2	
53-54	Bolt Kit		201672
55	Cover Top		202545
56	O-Ring	1	
57	Insert Seal	1	
20, 56-57	Insert Seal Kit		202333
58	Plug, Pipe	1	302011
5-13-20 58-59	Adapter Cover		203099